



PHASE 1> THE BEGINNING & THE END

Destination Ahead

Embark on an Automation Journey to Surpass Your Competitors

A futuristic, glowing blue and yellow molecular structure against a dark background. The structure consists of several dark blue spheres connected by thin lines, with one central sphere glowing brightly yellow and orange. The background is a deep blue with a subtle grid pattern.

The Need For More

Your organization has a vision. One that promises to improve healthcare and wellbeing, to introduce high-yielding food sources, or even to satisfy sustainable bio-energy demands. But chances are that no matter how specific your vision is, it is not a solitary endeavor.

In fact, in a time-sensitive and high-pressure industry, science-based mysteries including molecular mechanisms, diseases, and therapies are tackled from multiple perspectives. This means that companies ranging from ambitious startups to globally recognized brands can thrust your vision into a competitive race for each milestone or finish line.

But chances
are that no
matter how
specific your
vision is, it is
not a solitary
endeavor.



So how can you maximize your organization's efforts and surpass those of your competitors?

The background features a complex, abstract pattern of glowing fiber optic lines. These lines are densely packed and radiate from a central dark purple circle, creating a sense of depth and movement. The colors of the lines transition from bright yellow and orange near the center to vibrant teal and blue towards the edges. Small, multi-colored dots are scattered throughout the lines, adding to the intricate texture. The overall effect is reminiscent of a microscopic view of a fiber optic cable or a stylized representation of data flow.

What To Expect

In this seven-part [Destination Ahead](#) e-book series, we'll guide you through major phases that you can expect of your automation journey.

For those well-experienced with automated solutions, you might read a few sections to refresh your memory.

On the other hand, for those new to or lightly familiar with automation, and especially whole lab workflow automation, we encourage you to take in as much information as possible in every section.

We encourage
you to take
in as much
information as
possible in
every section.



The Destination Ahead e-book series will cover:

YOU ARE HERE

PHASE 1



The Beginning & End

Journey from status quo lab workflows to the land of whole lab automation for opportunity and a competitive edge. Whole lab workflow automation experts like HighRes Biosolutions serve as your North Star and personal escort along the way.

PHASE 2



Understand Your Situation, Your Goals, and Your Team

Introspection and a first-class crew make short work of pre-journey planning. Gather and organize your thoughts, and the thoughts of others, as you assemble your goal guideposts.

PHASE 3



Dive Deep into the World of Hardware

Hardware Harbor encompasses a large area. Learn helpful tips to traverse through seemingly endless devices and capabilities. Narrow capabilities and features to those best-suited for your budget as well as your current and future needs.

PHASE 4



Immerse Yourself in the World of Software

The Port of Software is an amazing destination along your journey. Gain an overview of data flow and software types and how to orchestrate all through a single, high-functioning information virtuoso. Then determine which platforms stack up to meet your needs.

PHASE 5



Finalize your Proposed Automated Solution Design

Did you chart the right course, or is a major correction in order? Before committing to a final whole lab workflow automation design, review the project overview and details from multiple perspectives.

PHASE 6



Set the Project Build in Motion

It's time to navigate from vision into reality. Get your teams and your site ready with close communication, detailed planning, and rigorous testing.

PHASE 7



Deploy!

Your automation journey isn't finished once the automated solution is in place. Prepare users and your new whole lab workflow automation system with knowledge transfer and system optimization. Put it to the ultimate battery of tests in your environment and with your samples and a host of quality and regulatory guidelines.



The Beginning

Congratulations! Each journey starts with a first step, and yours is reading this first e-book in our automation journey series. We're here for this and every step in your personal automation odyssey.

With that said, let's take another step by revisiting that overarching question.



How can you maximize your organization's efforts and surpass those of your competitors?



Depend on Whole Lab Workflow Automation

Incorporating one or two automated devices may improve a portion of a process yet shift the potential for bottlenecks and limitations to other workflow areas. On the other hand, whole lab workflow automation addresses the entire workflow to boost productivity, reduce project timelines, and ease data handling.



Which solution is right for your needs?

After reading through the second e-book in this series, "*Understand Your Situation, Your Goals, and Your Team*", you'll be in a better position to answer the question.





A Three-Pronged Approach

When it comes to introducing whole lab workflow automation into your lab, the best approach includes a holistic blend of hardware, software, and peopleware.

This approach isn't difficult, and your journey into whole lab workflow automation isn't a solo one, but it does require careful planning.

Incorporating one or two automated devices may improve a portion of a process yet shift the potential for bottlenecks and limitations to other workflow areas. On the other hand, whole lab workflow automation addresses the entire workflow to boost productivity, reduce project timelines, and ease data handling.



The [Destination Ahead](#) e-book series will lay out major phases for you to follow when setting out to integrate automated solutions including whole lab workflow automation in your laboratory or across your laboratory enterprise.

Kudos! Once you learn about each phase and go through the experience, congratulate yourself and the entire team on completing a successful journey. We are honored to be your escort and advisor along the way.

With your new whole lab workflow automation system and process in place, you can quantify progress toward achieving your organizational goals. Data can now be leveraged in ways not previously possible to boost your organization's efforts. By doing so, you can surpass your competitors and claim your stake in a highly competitive market.



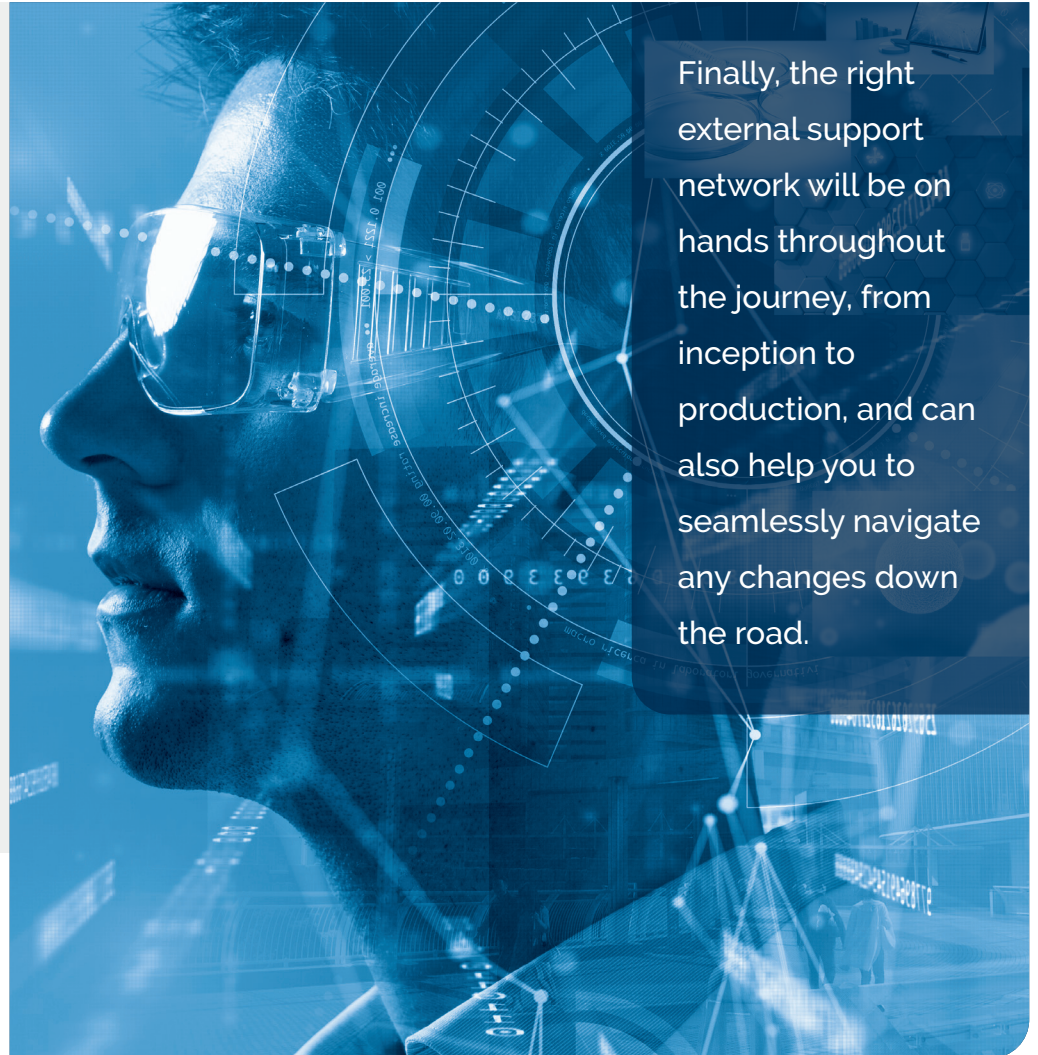


A Moment of Reflection

As you look back on your automation journey, recognize that each phase of this journey shaped your unique, amazing whole lab workflow automation solution. You will have a solid understanding that the most successful laboratory automation is a balance of hardware, software, and people.

Modular hardware distributes devices, components, and samples while easily and quickly adapting to changing workflow needs. All-encompassing software turns your labs into findable, accessible, interoperable, and reusable (FAIR) data factories by managing various processes and constructing powerful data streams across your facility or global enterprise.

Many internal people have the knowledge and ability to develop and deploy results-driven workflows, and to evaluate and shape data into lucrative, commercialized products and services.



Finally, the right external support network will be on hands throughout the journey, from inception to production, and can also help you to seamlessly navigate any changes down the road.

Connect with Us Before you Take the Next Step

Embarking on an automation journey? Depend on HighRes Biosolutions to be a friendly and experienced team member! Our multi-faceted experts are on hand to provide personalized guidance, helpful insights, and actionable tips through each phase of your unique journey.

Before you take that next step into automation, including whole lab workflow automation, reach out to us at sales@highresbio.com.

North American Headquarters

102 Cherry Hill Drive
Beverly, MA 01915 USA
Tele: 781-932-1912

European Headquarters

Unit D2, Broadoak Business Park
Ashburton Road West
Trafford Park, Manchester
M17 1RW UK

©2024, HighRes® Biosolutions. All Rights Reserved
EB-DIG-240203-02 RevA



Learn More

We invite you to read the second e-book in this **Destination Ahead** series, "*Understand Your Situation, Your Goals, and Your Team*". Here, you will learn how to plan and contextualize your journey and build a strong team.

